

Quick Reference Guide

Complete User Guide and PC Management software is included in the CD, can also be downloaded link [VMDR-888 User Guide - 09 22](#)

Prior to permanent mounting of the VMDR and cameras, lay out the system to familiarize the parts. Do bench test connections in vehicle PRIOR to permanent mounting of system so slots, cables and connectors are easily accessible

QR Code User Guide

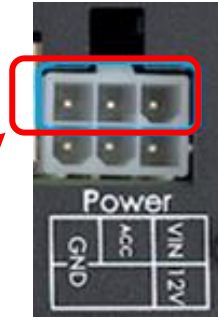


Require LCD monitor with RCA connection to connect to VMDR to view settings menu and camera angle

Power Connection

VMDR-888 power cable requires 3 wire connection to vehicle's fuse panel

- Yellow** = 12/24VDC Constant Power
- Blue** = IGN / ACC
- Black** = Ground



Connect the power cable 6 prong white plug to the VMDR-888 Power connector on the rear.

Use only the **3 wires on TOP** row (Yellow, Blue and Black) of the white Plug (Circled in blue) to connect to the vehicle fuse

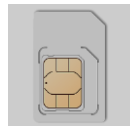
IMPORTANT: SD card MUST be formatted in the VMDR on on desktop PC software PRIOR to recording

Do NOT insert or Remove SD card while VDMR is powered On. Always power off system before handling card

SD card



- Remove the screw from the SD card slot.
- Each slot supports up to 512GB SD card. Must be class U3 / V3 or faster
- If only using 1 SD card, use SD Card Slot 1
- After format, SD card will show between 77.5 – 82.5MB



SIM Card (VMDR is compatible with T-Mobile carrier only)

If cellular data service was ordered through Ventra, a Standard side SIM card will be included and installed in the system. If customer purchases from T-Mobile, SIM card would need to be installed in SIM card **Slot 1 (Top slot)**
SIM card gold contacts should face downward when using Slot 1

Warning:
 Install VMDR system only when vehicle is safely parked, leveled and Powered OFF
 Professional installation is highly recommended as system connects to vehicle fuse. Refer to vehicle owner's manual

Quick Reference Guide

Connect camera cable to rear or VMDR

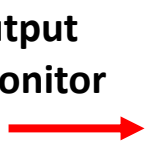
On the rear of VMDR, there are video input connections 1 – 8 (Black connectors with Tag)

Each camera requires a Ventra EX22-CBLxx mini DIN cable in various pre-made length

Connect EX22-CBL cable to VMDR video input, then connect to camera. (Connect camera to VMDR before running cable in vehicle and permanent mounting to test angle)

Some camera models have rotatable lens angle adjustment. Use wrench provided.

Video Output to LCD monitor



Camera Input 1 ~ 8

Requires EX22-CBL for each camera



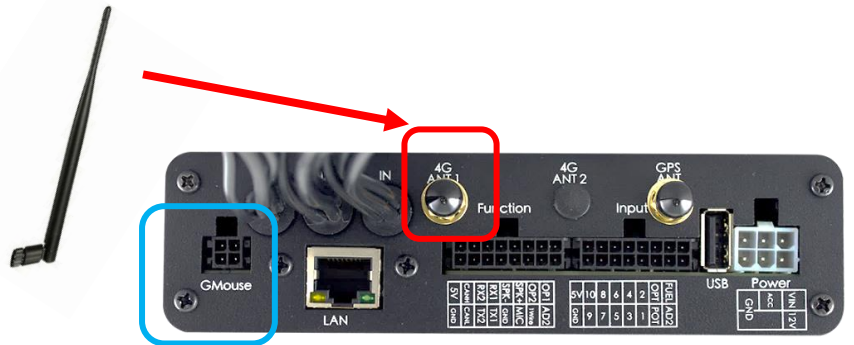
Connect to LCD monitor (sold separately)

On the rear of VMDR, Yellow RCA video output connectors to an external LCD monitor (not included)

Connect 4G antenna

Connect 4G antenna to 4G **Antenna 1** input

Antenna 2 input not used



Connect GPS Receiver

Connect the external passive GPS cable into the **G-Mouse** port on the rear left side of VMDR

The passive GPS receiver should be placed on the dashboard, or on windshield with direct line of sight to the sky for optimal reception. Do not cover the receiver



Remote Control

Access VMDR settings menu via remote control by selecting Menu button. Requires connection to LCD monitor



Remote control button Introduction			
Item	Description	Item	Description
1	Split screen display	7	Enter
2	Force recording	8	Reverse
3	Quad full-screen display	9	Fast forward
4	Speaker mute button	10	Playback mode, play button
5	Menu	11	Pause
6	Navigation	12	Stop and Exit

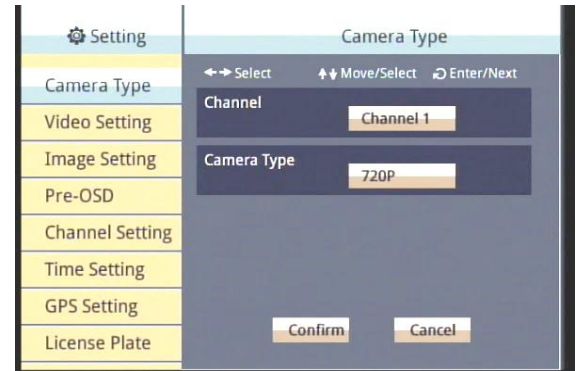
Settings

All settings are pre-configured and ready to go out of the box

Resolution of camera: Camera Type

Default is 1080P max at **15FPS**. If using 720P max **30FPS** cameras, **MUST** select CH and change resolution in setting for system to see/record CH.

System will reboot after each camera resolution configuration change



Change Clock and Time Zone in VMDR Time Setting

VentraCloud Remote Service (optional): 3G/4G Network

If subscribe to VentraCloud remote viewing service, the 4G network connections are pre-set. Will need to contact Ventra for login credential Default 4G network setting. Do NOT change unless instructed by Ventra

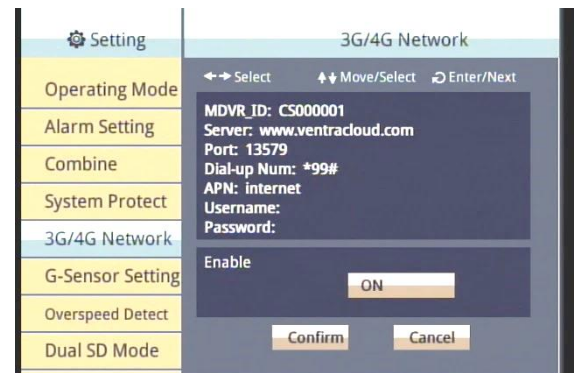
Server: www.ventracloud.com

Port: 13579

APN: fast.t-mobile.com **or** internet (T-Mobile only)

Dialup num: *99#

Requires Ventra 4G Config Software



Quick Reference Guide

Check Video Recordings of VMDR

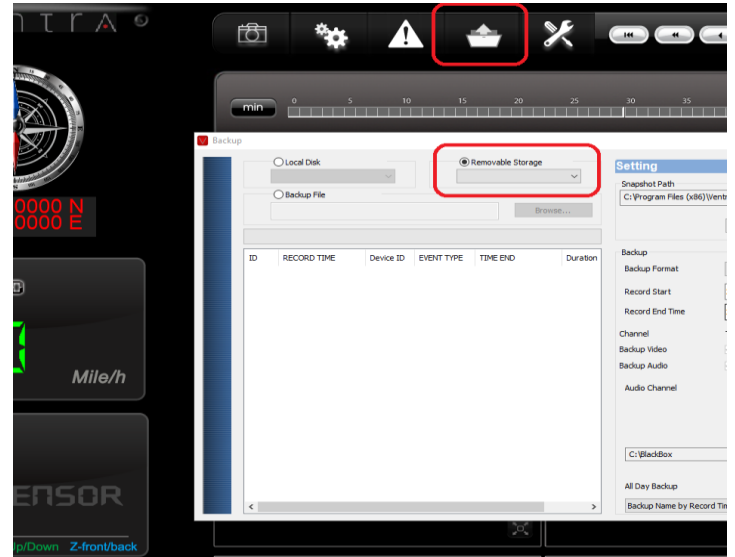
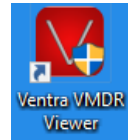
Once the cameras, cables, VMDR have been connected and powered on in a staging environment. Its time to check the video recordings. (If system has been powered on)

Power OFF the VMDR before removing the SD Card.

Insert SD card into computer and view with VMDR PC desktop software included in CD

Or download from Ventra VMDR-8 Series PC Software - V.2.2.6.354

<https://ventrainc.com/download-ventra/>



Click **Folder** icon to open select Drive pop up screen.

Select **Removable** storage button and select SD card drive from drop down menu

A list of all video recorded files will populate If VMDR was powered on and recording. Select any recording to view

